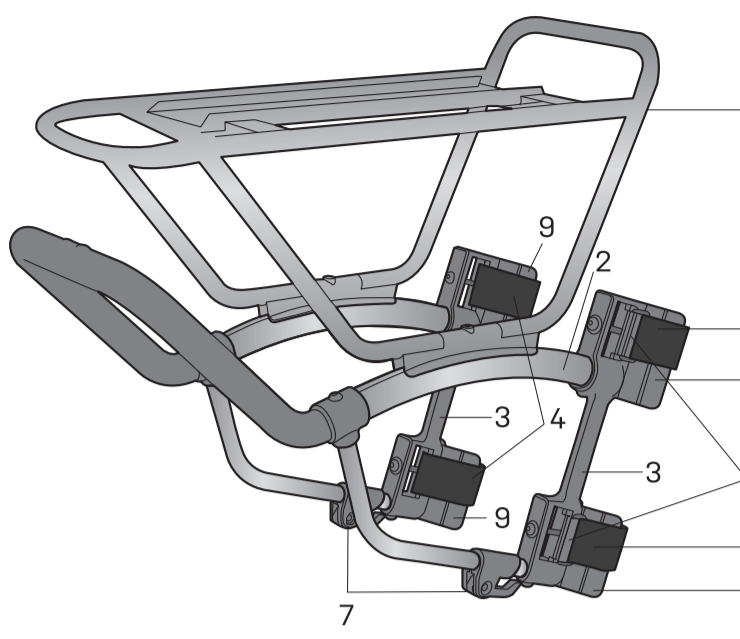
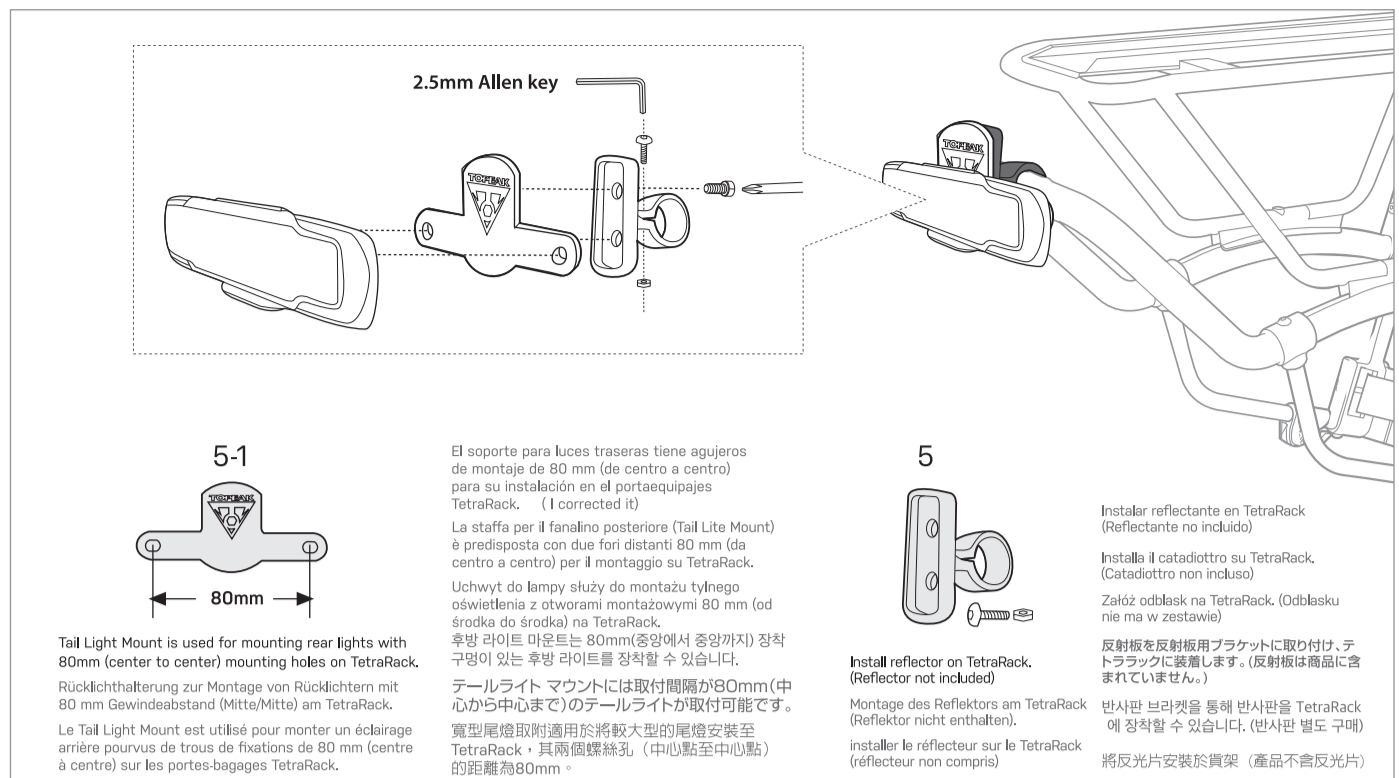
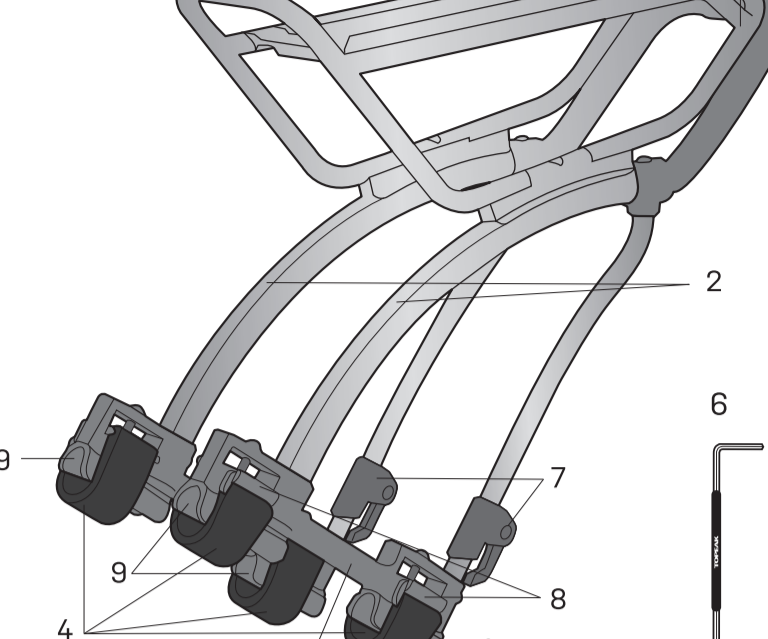


TETRARACK R1 (FRONT FORK)



TETRARACK R2 (SEATSTAYS)



Parts list table for TetraRack R1 and R2. Columns include: 1 Frame, 2 Rack Slide rail, 3 Mounting base, 4 Hook and loop straps, 5 Reflective bracket, 5-1 Tail Light Mount, 6 Allen key 2.5mm x 1, 7 Side pannier hook, 8 Strap tensioner, 9 Rubber pad. Corresponding parts in other languages are listed in the same row.

Technical specifications table for TetraRack R1/R2. It lists maximum weight capacity (7kg/15lb for R1, 9kg/20lb for R2), wheel size compatibility (26"-29"), tire width compatibility (≤1.5"), width compatibility (front fork 75-105mm, seatstays 75-105mm), and various dimensions and material specifications in multiple languages.

WARNING / WARNUNG / AVERTISSEMENT / ADVERTENCIA / ATTENZIONE / UWAGA / 주의 / 경고 / 注意

Warning section containing diagrams and text. It shows the correct seatstay angle (40 degrees) and front fork width (75-105mm) for compatibility. It also includes a 'MAX WEIGHT CAPACITY' table and diagrams showing what is not suitable for mounting on unique frame geometries.

INSTALLATION / MONTAGE / INSTALACIÓN / MONTÁZ / 取付方法 / 장착 / 安裝

Installation section with 9 numbered steps. Step 1: Unscrew 6 bolts of mounting base. Step 2: Adjust width of rack to fit bike front forks. Step 3: Take hook and loop straps with metal loop. Step 4: Buckle metal loop into the hook of strap tensioner. Step 5: Adjust the strap tensioner hook. Step 6: Tighten strap to secure the mounting base. Step 7: Tighten strap to secure the mounting base. Step 8: Tighten strap to secure the mounting base. Step 9: Use 2.5 mm Allen key to tighten mounting base. Includes diagrams and multilingual instructions for each step.

